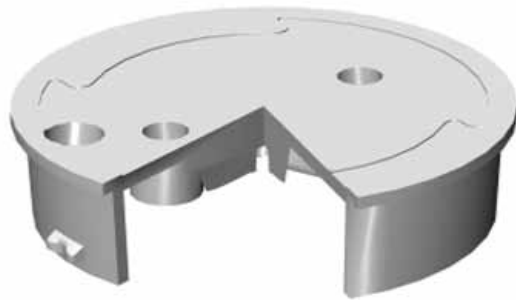
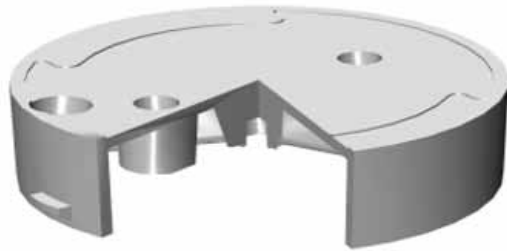




# Round Box Series 708 & 910



## Cover Options

See reverse for details of various cover and frame options.

## Box Options

**Product**     **Body**  
**708-9**

Dimensions:

Inside	Outside	
L 150 Ø	A 160 Ø	D 230
X 195 Ø	E 205 Ø	

**Product**     **Body**  
**910-10**

Dimensions:

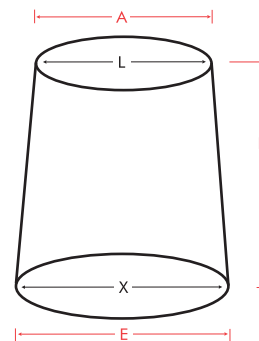
L 240 Ø	A 250 Ø	D 265
X 300 Ø	E 335 Ø	

## Bottom Plates/Floors

See reverse for details of bottom plates/floors and grate options.

## Options & Accessories:

- Colours available: Black body, green cover only



Application Notes: Carson boxes are suitable for a wide range of applications, from grass verge (A15) to car park & footpath applications (B125). It is important to select the correct cover and frame and installation method to suit the loading and local conditions. Technical advice is available from Carson. These products are not designed for carriageway use. *All dimensions to nearest 5mm.* Due to our policy of continuous improvement, we reserve the right to change specifications without notice.



IDA Business & Technology Park,  
Racecourse Road, Roscommon, Ireland.  
Tel: +353 (0)9066 25922

Fax: +353 (0)9066 25921  
email: [sales@carsonind.com](mailto:sales@carsonind.com)

[www.carsonind.com](http://www.carsonind.com) [www.multiduc.com](http://www.multiduc.com)



Glendora, California

[www.carsonind.com](http://www.carsonind.com)



# Round Box Series 708 & 910

## Material Data

(Specification available on request)

### Structural Foam – High Density Polyethylene

HDPE has excellent chemical resistance to ethanol, acetone, diesel etc. and is unaffected by sulfate ground conditions.

- Recyclable
- Robust – no breakage waste
- Completely impervious to water
- Nitrogen injection creates cellular core (CFC free)
- High strength to weight ratio
- High stiffness to weight ratio
- Easy to cut for duct entries

Properties of unfoamed resin	Test Method	HDPE
Tensile Strength	ISO 1926	21.37 - 37.92 N/mm <sup>2</sup>
Flexural Modulus	ISO 1290 - 2	1103 - 1447 N/mm <sup>2</sup>
Notched Izod Impact Strength	ISO 180 - 1A	270 - 800 J/M
Deflection Temperature	ISO 75 - 1	73 - 82°
Density	ISO 8962	0.955 g/cm <sup>3</sup>
Chemical Resistance	–	Excellent
Water Absorption	–	None

## Vertical Load Rating

Meets the vertical load requirements of EN124 Class A15 i.e. 15kN (~1.5T) test load. Suitable for pedestrian areas.

## Cover and Frame Options

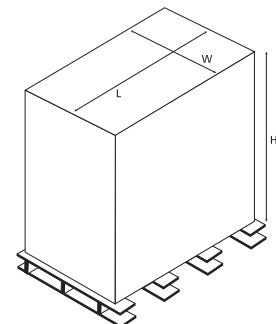
- HDPE (A15) T Lid or Drop-in
- Other options available on request.

## Base Options

- Duct and pipe entries can be provided to suit customer applications
- Bottom plates/floors and grates to protect or locate internal equipment can be provided.

## Standard Shipping Configuration

	708	910
#/pallet	336	99
L	1090	1065
W	890	915
H	965	1295



(The configuration shown can change to optimise transport utilisation.)

Application Notes: Carson boxes are suitable for a wide range of applications, from grass verge (A15) to car park & footpath applications (B125). It is important to select the correct cover and frame and installation method to suit the loading and local conditions. Technical advice is available from Carson. These products are not designed for carriageway use. All dimensions to nearest 5mm. Due to our policy of continuous improvement, we reserve the right to change specifications without notice.



IDA Business & Technology Park,  
Racecourse Road, Roscommon, Ireland.  
Tel: +353 (0)9066 25922  
Fax: +353 (0)9066 25921  
email: sales@carson europe.com  
www.carson europe.com www.multiduc.com



www.carsonind.com