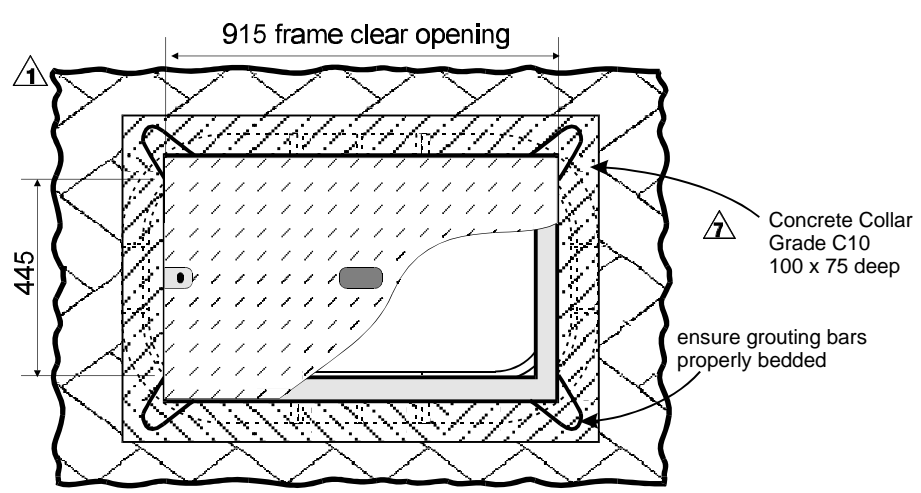
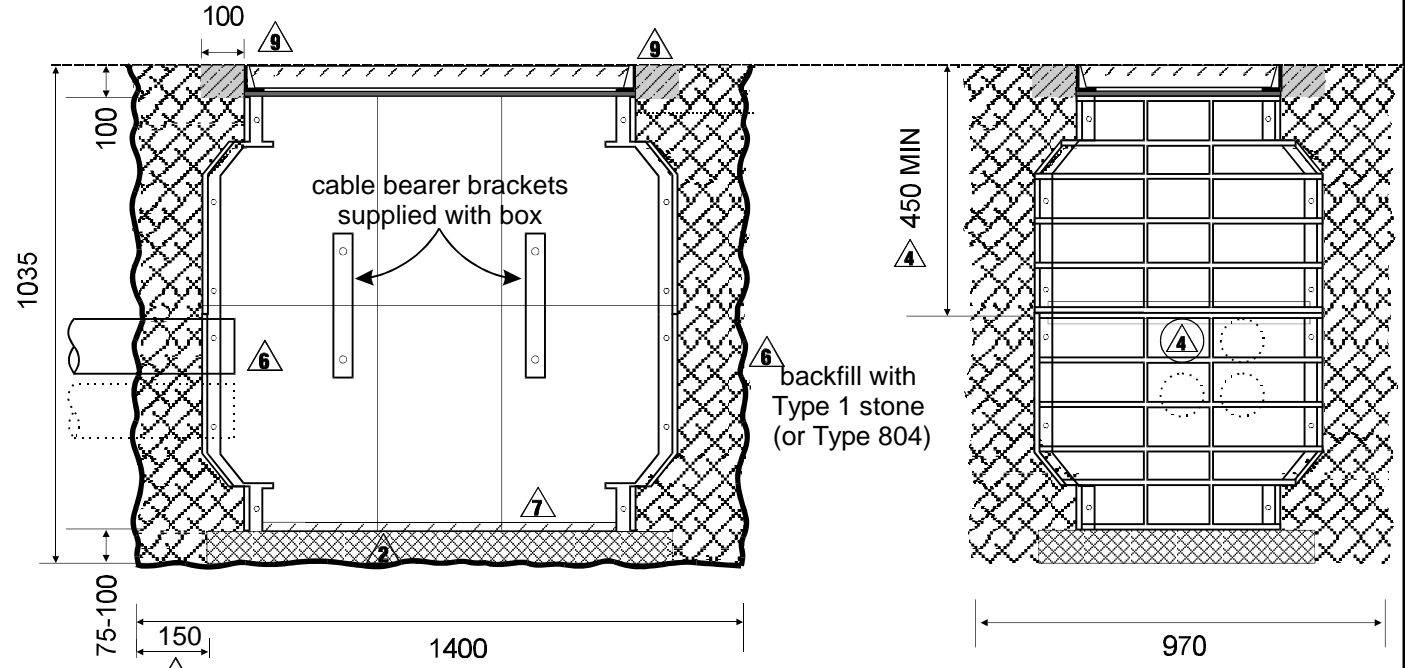


INSTALLATION NOTES

- Excavate site to the depth required. Allow 150mm all around the wall for backfill and 75-100mm for the base.
- Form a base (min 75mm thick) with compacted stone or lean dry mix concrete. Check depth with tape, allow for cover and frame. Arrange for sump and cable anchors if required. Where anchor required, floor to be reinforced with steel mesh. [Lean Mix - use 1 cement: 10 aggregate/sand]
- Place the box in the excavation with frame fitted. Using a screed, level the top of the box with the surrounds. Adjust the depth by packing material under the walls.
- Mark the position for duct entries.
- Remove box from the excavation. Cut duct entries with holesaw. If duct already in situ, see separate instructions for method to form 'drop over' or 'build around' box.
- Replace box. Place length of duct section through cut-out holes and extending to outside of excavation. The duct should extend inside the box by 25-50mm.
- Form a floor using mortar. Fall to sump if fitted.
- Backfill with as dug, Type 1 stone [mixed size road stone] or lean mix, compacting frequently up to the top of the frame. The choice of backfill material will not affect the performance of the box and should be consistent with the preferred compaction method and local conditions. Where the excavation is less than 0.5m from the road, lean mix backfill is recommended.
- Place frame and cover in position. Form a mortar haunch around the frame 100mm wide by 75 deep. Ensure the grouting lugs on the frame are properly bedded in the concrete collar. The mortar can be placed under the frame to adjust the finish level.



PLAN

excavate 150mm clearance around box

END ELEVATION

*General Notes.
This installation is suitable for all Class B125 applications i.e. where slow moving heavy vehicles have access. It is not suitable for fastmoving traffic. Although the dimensions on this instruction refer to a particular size of vault, the installation method is the same for all PolyVaults.*



Scale:	N.T.S.		Drg No.	
Dwn:	R.H.	Date:	22/9/99	1836-36 Polyvault Installation Instructions
Chkd:		Appvd:	RH.	